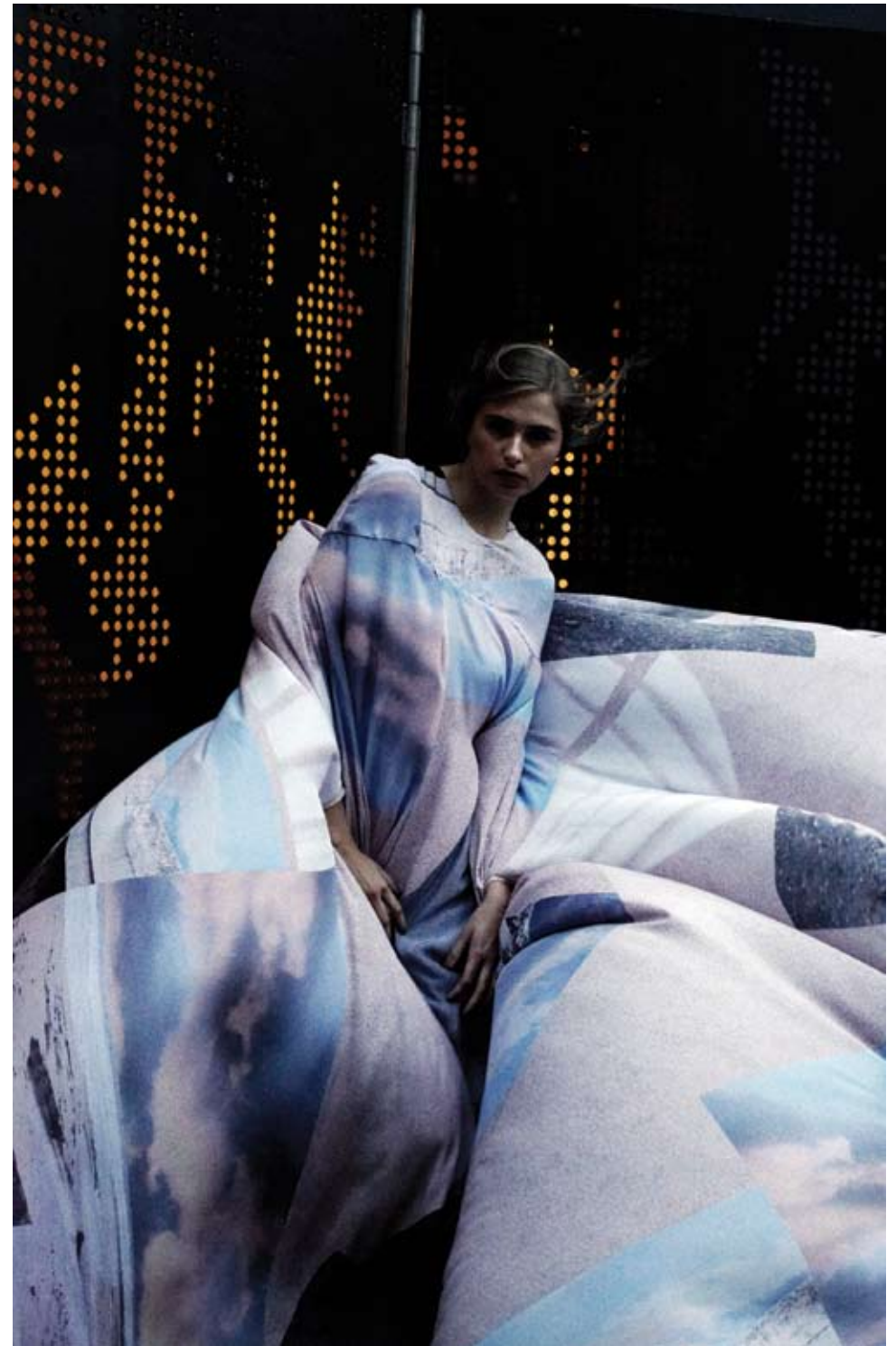


Teatum Jones









Teatum Jones
“Sometimes It Snows In April”
Spring Summer 2012

“The Liberty Dress”
TJ/SS12/DRS004 — Escapist Placement Print
Silk Heavy Crêpe de Chine with 100% Silk Lining



“The Liberty Dress”
TJ/SS12/DRS004 — Escapist Placement Print
Silk Heavy Crêpe de Chine with 100% Silk Lining



“The Liberty Dress”
TJ/SS12/DRS004 — Escapist Placement Print
Silk Heavy Crêpe de Chine with 100% Silk Lining



“The Virginia Skirt”
TJ/SS12/SKT001 — Lilac Taupe and Blush Braille Panelling
Textured Viscose Mix

worn with
“The Jimmie Vest”
TJ/SS12/VEST001 — Escapist Placement Print
Silk Crêpe de Chine



“The Cynthia Dress”
TJ/SS12/DRS001 — Lilac Taupe
Textured Viscose Mix



“The Connie Dress”
TJ/SS12/DRS011 — Escapist Placement Print
Silk Crêpe de Chine



“The Connie Dress”
TJ/SS12/DRS011 — Escapist Placement Print
Silk Crêpe de Chine



“The Connie Dress”
TJ/SS12/DRS011 — April Polkadot Print
Silk Crêpe de Chine



“The Connie Dress”
TJ/SS12/DRS011 — Manhattan Pink
Silk Crêpe de Chine

and
“Maggie Buckle Belt”
TJ/SS12/BELT001/SKINNY — Cloudy Lilac
Leather



“The Joanie Skirt”
TJ/SS12/SKT003 — April Polkadot Print
Silk Heavy Crêpe de Chine and Blush Braille Waistband

worn with
“The Jimmie Vest”
TJ/SS12/VEST001 — Hazy Yellow
Silk Brocade Organza



“The Olivia Dress”
TJ/SS12/DRS009 — Hazy Yellow
Silk Brocade Organza

worn with
Nude Powermesh Slip



“The Etta Shirt Dress”
TJ/SS12/DRS012 — April Polkadot Print
Silk Crêpe de Chine



“The Olivia Dress”
TJ/SS12/DRS009 — April Polkadot Print
Silk Crêpe de Chine

and
“Peggy Stud Belt”
TJ/SS12/BELT002/SKINNY — Cloudy Lilac
Leather



“The Eddie Biker Jacket”
TJ/SS12/JKT004 — Quilted Pink and Blush Braille
Textured Viscose Mix

worn with
“The Jimmie Vest”
TJ/SS12/VEST001 — Manhattan Pink
Silk Crêpe de Chine

and
“The Loretta Pant”
TJ/SS12/TRS001 — Lilac Taupe
Textured Viscose Mix



“The Olivia Dress”
TJ/SS12/DRS009 — Blush Braille
Textured Viscose Mix



“The Mary Ellen T-Shirt”
TJ/SS12/TOP002 — Blush Braille
Textured Viscose Mix

worn with
“The Lincoln Pant”
TJ/SS12/TRS002 — Smoked Blush with Lilac Taupe Panelling
Superfine Wool with Textured Viscose Mix Panelling



“The Etta Shirt Dress”
TJ/SS12/DRS012 — Hazy Yellow
Silk Brocade Organza

worn with
“The Jackie Shorts”
TJ/SS12/SHORTS001 — Quilted Pink and Blush Braille
Textured Viscose Mix

and
“Peggy Stud Belt”
TJ/SS12/BELT002/WIDE — Cloudy Lilac
Leather



“The Etta Shirt Dress”
TJ/SS12/DRS012 — Hazy Yellow
Silk Brocade Organza

worn with
“The Jackie Shorts”
TJ/SS12/SHORTS001 — Quilted Pink and Blush Braille
Textured Viscose Mix

and
“Peggy Stud Belt”
TJ/SS12/BELT002/WIDE — Cloudy Lilac
Leather



“The Joanie Skirt”
TJ/SS12/SKT003 — Quilted Pink and Blush Braille
Textured Viscose Mix

worn with
“The Jimmie Vest”
TJ/SS12/VEST001 — April Polkadot Print
Silk Crêpe de Chine



“The Eddie Biker Jacket”
TJ/SS12/JKT004 — Cloudy Taupe with Blush Braille Inserts
Nappa Leather and Gold Metal work

worn with
“The Mary Ellen T-Shirt”
TJ/SS12/TOP002 — Escapist Placement Print
Silk Crêpe de Chine

and
“The Jackie Shorts”
TJ/SS12/SHORTS001 — Quilted Pink and Blush Braille
Textured Viscose Mix



“The Lincoln Jacket”
TJ/SS12/JKT003 — Smoked Blush
Superfine Wool

worn with
“The Jimmie Vest”
TJ/SS12/VEST001 — Hazy Yellow
Silk Brocade Organza

and
“The Lincoln Pant”
TJ/SS12/TRS002 — Smoked Blush with Lilac Taupe Panelling
Superfine Wool and Textured Viscose Mix Panelling



“The Etta Shirt Dress”
TJ/SS12/DRS012 — Manhattan Pink
Silk Crêpe de Chine

and
“Maggie Buckle Belt”
TJ/SS12/BELT001/SKINNY — Cloudy Lilac
Leather



“The Etta Shirt Dress”
TJ/SS12/DRS012 — Manhattan Pink
Silk Crêpe de Chine

and
“Maggie Buckle Belt”
TJ/SS12/BELT001/SKINNY — Cloudy Lilac
Leather



“The Etta Shirt Dress”
TJ/SS12/DRS012 — Manhattan Pink
Silk Crêpe de Chine

and
“Maggie Buckle Belt”
TJ/SS12/BELT001/SKINNY — Cloudy Lilac
Leather



“The Jimmie Vest”
TJ/SS12/VEST001 — Manhattan Pink
Silk Crêpe de Chine

worn with
“The Loretta Pant”
TJ/SS12/TRS001 — Lilac Taupe
Textured Viscose Mix



“The Eddie Biker Jacket”
TJ/SS12/JKT004 — Cloudy Taupe with Blush Braille Inserts
Nappa Leather and Gold Metal work

worn with
“The Jimmie Vest”
TJ/SS12/VEST001 — Manhattan Pink
Silk Crêpe de Chine

and
“The Lincoln Pant”
TJ/SS12/TRS002 — Smoked Blush with Lilac Taupe Panelling
Superfine Wool with Textured Viscose Mix Panelling

and
“Peggy Stud Belt”
TJ/SS12/BELT002/WIDE — Deep Blue Snake Print
Leather



“The Franklin Coat”
TJ/SS12/COAT001 — Blush Braille
Textured Viscose Mix

worn with
“The Mary Ellen T-Shirt”
TJ/SS12/TOP002 — Escapist Placement Print
Silk Crêpe de Chine

and
“The Lincoln Pant”
TJ/SS12/TRS002 — Smoked Blush with Lilac Taupe Panelling
Superfine Wool with Textured Viscose Mix Panelling



“The April Dress”
TJ/SS12/DRS003 — April Polkadot Print
Silk Heavy Crêpe de Chine with 100% Silk Lining and Powermesh Inner Structure

and
“Peggy Stud Belt”
TJ/SS12/BELT002/WIDE — Cloudy Lilac
Leather



“The April Dress”
TJ/SS12/DRS003 — April Polkadot Print
Silk Heavy Crêpe de Chine with 100% Silk Lining and Powermesh Inner Structure

and
“Peggy Stud Belt”
TJ/SS12/BELT002/WIDE — Cloudy Lilac
Leather



“The Deliverance Dress”
TJ/SS12/DRS007 — Blush Braille and Lilac Taupe
Textured Viscose Mix with 100% Silk Lining



“The Eddie Biker Jacket”
TJ/SS12/JKT004 — Cloudy Taupe with Blush Braille Inserts
Nappa Leather and Gold Metal work

worn with
“The Jimmie Vest”
TJ/SS12/VEST001 — Manhattan Pink
Silk Crêpe de Chine

and
“The Graceful Skirt”
TJ/SS12/SKT002 — Escapist Placement Print
Silk Heavy Crêpe de Chine



“The Eddie Biker Jacket”
TJ/SS12/JKT004 — Cloudy Taupe with Blush Braille Inserts
Nappa Leather and Gold Metal work

worn with
“The Jimmie Vest”
TJ/SS12/VEST001 — Manhattan Pink
Silk Crêpe de Chine

and
“The Graceful Skirt”
TJ/SS12/SKT002 — Escapist Placement Print
Silk Heavy Crêpe de Chine



“The Manhattan Dress”

TJ/SS12/DRS006 — Blush Braille and Lilac Taupe
Textured Viscose Mix with 100% Silk Lining

and

“Peggy Stud Belt”

TJ/SS12/BELT002/SKINNY — Cloudy Lilac
Leather



“The Manhattan Dress”

TJ/SS12/DRS006 — Blush Braille and Lilac Taupe
Textured Viscose Mix with 100% Silk Lining

and

“Peggy Stud Belt”

TJ/SS12/BELT002/SKINNY — Cloudy Lilac
Leather



“The April Dress”
TJ/SS12/DRS003 — Blush Braille and Lilac Taupe
Textured Viscose Mix with 100% Silk Lining and Powermesh Inner Structure

and
“Peggy Stud Belt”
TJ/SS12/BELT002/WIDE — Cloudy Lilac
Leather



“The April Dress”
TJ/SS12/DRS003 — Blush Braille and Lilac Taupe
Textured Viscose Mix with 100% Silk Lining and Powermesh Inner Structure

and
“Peggy Stud Belt”
TJ/SS12/BELT002/WIDE — Cloudy Lilac
Leather



“The Revolution Coat-Dress”
TJ/SS12/DRS005 — Escapist Placement Print
Silk Heavy Crêpe de Chine

and
“Maggie Buckle Belt”
TJ/SS12/BELT001/MID — Powder Blue Snake Print
Leather



“The Revolution Coat-Dress”
TJ/SS12/DRS005 — Escapist Placement Print
Silk Heavy Crêpe de Chine

and
“Maggie Buckle Belt”
TJ/SS12/BELT001/MID — Powder Blue Snake Print
Leather



“The Cynthia Dress”
TJ/SS12/DRS001 — Manhattan Pink
Silk Crêpe de Chine

and
“Maggie Buckle Belt”
TJ/SS12/BELT001/MID — Deep Blue Snake Print
Leather



“The Marcella Jumpsuit”
TJ/SS12/JUMP001 — Blush Braille and Lilac Taupe
Textured Viscose Mix with 100% Silk Lining and Powermesh Inner Structure

and
“Peggy Stud Belt”
TJ/SS12/BELT002/WIDE — Cloudy Lilac
Leather



“The Marcella Jumpsuit”
TJ/SS12/JUMP001 — Blush Braille and Lilac Taupe
Textured Viscose Mix with 100% Silk Lining and Powermesh Inner Structure

and
“Peggy Stud Belt”
TJ/SS12/BELT002/WIDE — Cloudy Lilac
Leather



“The Liberty Dress”
TJ/SS12/DRS004 — Blush Braille and Lilac Taupe
Textured Viscose Mix with 100% Silk Lining

and
“Peggy Stud Belt”
TJ/SS12/BELT002/SKINNY — Cloudy Lilac
Leather



“The Liberty Dress”
TJ/SS12/DRS004 — Blush Braille and Lilac Taupe
Textured Viscose Mix with 100% Silk Lining

and
“Peggy Stud Belt”
TJ/SS12/BELT002/SKINNY — Cloudy Lilac
Leather



“The Liberty Dress”
TJ/SS12/DRS004 — Blush Braille and Lilac Taupe
Textured Viscose Mix with 100% Silk Lining

and
“Peggy Stud Belt”
TJ/SS12/BELT002/SKINNY — Cloudy Lilac
Leather



“The Hope Dress”
TJ/SS12/DRS008 — Escapist Placement Print
Silk Heavy Crêpe de Chine with Silk Georgette Drape and 100% Printed Silk Georgette Lining



“The Hope Dress”
TJ/SS12/DRS008 — Escapist Placement Print
Silk Heavy Crêpe de Chine with Silk Georgette Drape and 100% Printed Silk Georgette Lining



“The Infinite Dress”
TJ/SS12/DRS002 — Escapist Placement Print
Silk Crêpe Satin with Powermesh Inner Structure

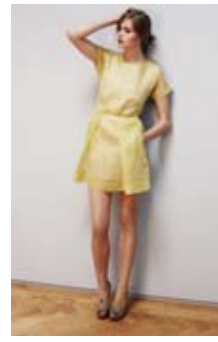


“The Infinite Dress”
TJ/SS12/DRS002 — Escapist Placement Print
Silk Crêpe Satin with Powermesh Inner Structure



“The Infinite Dress”
TJ/SS12/DRS002 — Escapist Placement Print
Silk Crêpe Satin with Powermesh Inner Structure





Credits

Styling
Kate Rose Morris

Photography
Kristin Vicari

Model
Caroline Debruhl at IMG

Make Up
Ciara O'Shea with Chantecaille and
Obsessive Compulsive Cosmetics

Hair
Michael Jones at Bumble&Bumble

Digital Technician
Alice Whitby

Design and Production of Look Book
Keith Baker at Formandcuc

Shoot Location
T+T House 001 designed by Teatum+Teatum

Contacts

Teatum Jones Studio
26 Make Space Studios
Newnham Terrace
London, SE1 7DR

Sales Contact
sales@teatumjones.com
+44(0)7984961726

Press Contact
Lian Hirst and Rob Davies at
Trace Publicity
press@tracepublicity.com
+44(0)2072409898

Special Thanks to

Alison Hastie
Tom and James at Teatum+Teatum
Jez Lysaght and Nicholai
Kristin Vicari
Kate Rose Morris
Rob and Lian
Richard Wilbraham
Jon and Keith Cox
Atilla and Aimee
Christin Yu
Phoebe Smith
Nez
Paula, Nailya, Tian and Larisa
Salama Alabbar and Holly Williams
Tala Elle Samman
Jessica Bumpus
Lisa Weiss
Reem Abbar
Clare Rous and Kara Iland
Zoe Brown
Lorraine Abela and Michelle Mahlke
Annie Lennox and Tara at XIX
Jess, Sarah, Emily and Eugene
Keith Baker
Dominique Fenn
Neil Moodie

Caroline Debruhl
Sean Frank
Stella Magazine
Cassandra Maxwell at CLMUK
Piera at Refinery29
Ciara, Riggs and Michael
Scott Arnot
Laura Macey
Scott Cooper
John Swinfield and Plinio
Louise Blanc
Barry Francis and Nacem Aswat
Lorraine and Jack
Tom and Lou
Maggie, James and Niamh
Mary Ellen Mullarkey
Seamus, Marion, Ruairi and Teddy Teatum
Gary Lloyd
Sarah Robinson
Jacquie, Alan and Steven Jones
Karolyn, Phil, Sam and Daisy Angiolini
Nicci Keene
Rebecca and Denis Geary at Make Space Studios
Katie, Tom and Henry
Laura, Leshia, Elena, Nancy, Sola
Generation Press

teatumjones.com