

# SPECTRAL LINE Spring/Summer 2012

Christopher RÆBURN



Womenswear Collection

Grey

S | M | L



Womenswear Collection



**1** SS12 – WSBOM / Swiss Bomber

Womenswear Collection

Navy blue

S | M | L



SS12 – WSAIL / Sailor Jacket

Womenswear Collection

Red / Red Tape / Olive  
Blue / Blue Tape / Olive  
Yellow / Yellow Tape / Olive  
Watermelon / Red Tape / Olive  
Green / Green Tape / Olive  
Black / Black Tape / Olive

S | M | L



A

B



A → SS12 – WPOP / Pop-Out Parka

B → SS12 – WZG / Pop-Out Parka Inner

Womenswear Collection

Black/Black Tape  
Grey/Grey Tape

S | M | L



SS12 – WKIM/Waxed Cotton Kimono Coat

Womenswear Collection

Black/Black Tape  
Grey/Grey Tape

S | M | L



SS12 – WBOM/Waxed Cotton Bomber Jacket

Womenswear Collection

Black / Black Tape  
Orange / Orange Tape  
Olive / Olive Tape

S I M I L



 SS12 – WPSJ / Para-Suit Jacket

Womenswear Collection

Black / Black Tape  
Orange / Orange Tape  
Olive / Olive Tape

S I M I L



 SS12 – WPG / Para-Suit Gilet

Womenswear Collection

Red / Red Tape  
Blue / Blue Tape  
Yellow / Yellow Tape  
Watermelon / Red Tape  
Green / Green Tape  
Black / Black Tape  
Flouro / Grey Tape

S | M | L



SS12 – WDIP / Dipped Hem Anorak

Womenswear Collection

Rainbow / Grey Tape  
Red / Red Tape  
Blue / Blue Tape  
Yellow / Yellow Tape  
Watermelon / Red Tape  
Green / Green Tape  
Black / Black Tape  
Flouro / Grey Tape

S | M | L



SS12 – WCP / Cropped Parka

Womenswear Collection

Red / Red Tape  
Blue / Blue Tape  
Yellow / Yellow Tape  
Watermelon / Red Tape  
Green / Green Tape  
Black / Black Tape  
Flouro / Grey Tape

S | M | L



10

SS12 - WXB / Cross Back Jacket

Womenswear Collection

Rainbow / Grey Tape  
Red / Red Tape  
Blue / Blue Tape  
Yellow / Yellow Tape  
Watermelon / Red Tape  
Green / Green Tape  
Black / Black Tape  
Flouro / Grey Tape

S | M | L



11

SS12 - WW / Windcheater

Womenswear Collection

Cream/Blue Print  
Cream/Red Print  
Charcoal/Reflective

S | M | L



12

SS12-WPUL/Squirrel Print Pullover

Womenswear Collection

Heather/Blue Print/Blue Tape  
Heather/Red Print/Red Tape  
Heather/Rainbow Tape

S | M | L



13

SS12-WHD/Hoodie Dress



Womenswear Collection

Blue/Charcoal Grey  
Navy/Charcoal Grey  
Red/Charcoal Grey  
Green/Charcoal Grey  
Black/Charcoal Grey  
Black/Black

S | M | L



14

SS12 – WT MID / T-Shirt Dress Midi

Womenswear Collection

Blue/Charcoal Grey  
Navy/Charcoal Grey  
Red/Charcoal Grey  
Green/Charcoal Grey  
Black/Charcoal Grey  
Black/Black

S | M | L



15

SS12 – WT MIN / T-Shirt Dress Mini

Spring/Summer 2012 marks an evolution for Christopher Ræburn. An adventurous development, his signature men's and women's outerwear styles are complemented by a newly broadened collection of ready-to-wear apparel.

"A natural evolution, this season is inspired by the exciting challenge of new garment categories and our playful experiments with colour", comments Ræburn. "We've ensured we stay true to our principles of provenance and respect for original garment detailing, as well as undertaking a renewed focus on function."

Continuing his core ranges of 'Remade', 'British' and 'Lightweight', the collection is now accompanied by a new 'Jersey' offering, all showcased as part of London Fashion Week.

**REMADE** — At the core of the Christopher Ræburn collection is the principle of 'Remade', a demonstration of the craft and quality behind every garment. Each limited edition style is reconstructed from European vintage military fabrics and clothing.

Every 'Remade' garment is strictly limited to 50 pieces worldwide, the range includes a

men's Swiss Pac-Away Jacket, a self-containable piece that compacts into an integrated bag for simple handling. Complemented by the women's Swiss Bomber with jersey lining, both styles are crafted from original 1950s Swiss military maccs.

A women's highlight is the Sailor Jacket, made from men's sailor smocks, the original bibs re-appropriated as pockets. The range is completed by the men's Pop Out Mac, the outer reconstructed from 1950s rubberised capes with a hand silk screen printed inner, as well as a detachable quilted lining remade from British military issue fabric. A women's version is crafted from Skylon and re-appropriated 1980s German Parka linings.

'Remade' hosts this season's animal of choice, a reflective Squirrel remade from high visibility vests.

**BRITISH** — Continuing his commitment to British industry and textiles, this season Ræburn has partnered with Halley Stevenson, a waxed waterproof fabric mill in Dundee, Scotland.

A key transitional range, the 'British' offering includes a compactable Wax Cotton Jacket for men (with instructions) and a Wax Cotton Kimono Coat for women. Wax Cotton Bomber jackets provide a bridge into Summer, the women's style a revisit to last season's popular Parallel Bomber jacket.

**LIGHTWEIGHT** — A brilliantly vibrant range for Spring/Summer, 'Lightweight' includes parkas and hoodies each featuring integrated bags for easy compaction, perfect for simple handling and indecisive conditions.

The range features garments produced in both reconstructed parachute fabric, such as the Para-Suit Jacket for men and Para-Suit Gilet for women, as well as showerproof Skylon pieces such as the signature men's Parka and Hoodie.

The women's offering includes the Windcheater and a Dipped Back Anorak, as well as the Cross Back Jacket, featuring an intelligent drawstring technique to shape both waist and sleeves.

**JERSEY** — A fresh addition to Ræburn's collection, the 'Jersey' range offers accessible everyday garments. A new signature, the topography-inspired Squirrel printed pieces are made from 100% organic cotton jersey, available as both the Squirrel Print Pullover for men and the Long Pullover for women.

Constructed from light British made jersey are the Hoodie Dresses, Reversible Hoodies and men's Jackets. The new T-Shirt Dresses and men's Tees feature concealed front and back pockets, each crafted in association with Earth Positive to ensure sustainable and efficient production.

Christopher Ræburn is a British Fashion Award nominee for Emerging Menswear Talent, and a NEWGEN women's award winner.



Menswear Collection

Olive Green / Yellow (Single)  
Olive Green / Black (Single)  
Olive Green / Yellow (+Liner)  
Olive Green / Black (+Liner)

S | M | L



22 Menswear Collection



B



A → SS12 – MPOM / Pop Out Mac  
B → SS12 – MPOM / Pop Out Mac Inner

Menswear Collection

Grey / Grosgrain zip

S | M | L



23

SS12 – MPOJ / Swiss Pac-Away Jacket

Menswear Collection

Red  
Grey  
Black

S | M | L



24

SS12 – MBOM / Wax Cotton Bomber

Menswear Collection

Red  
Grey  
Black

S | M | L



25

SS12 – MFJT / Wax Cotton Jacket

Menswear Collection

Blue  
Yellow  
Black

S | M | L



26

SS12 – MPP / Skylon Parallel Parka

Menswear Collection

Blue  
Yellow  
Red  
Green  
Black

S | M | L



27

SS12 – MRP / Skylon Hoodie

Menswear Collection

Orange  
Olive

S | M | L



28

SS12 – MPSJ / Para-Suit Jacket

Menswear Collection

Craem / Blue Print  
Craem / Red Print  
Charcoal / Reflective

S | M | L



29

SS12 – MPUL / Squirrel Print Pullover



Menswear Collection

Red / Taupe Tape  
Blue / Mélange Grey  
Yellow / Mélange Grey  
Red / Mélange Grey  
Green / Mélange Grey  
Black / Mélange Grey

S | M | L



30

SS12 – MRH / Reversible Skylon Hoodie

Menswear Collection

Mélange Grey / Olive  
Mélange Grey / Orange

S | M | L



31

SS12 – MJJH / Jersey Jacket – Hoodie

Menswear Collection

Blue / Mélange Grey  
Yellow / Mélange Grey  
Red / Mélange Grey  
Green / Charcoal Grey  
Black / Mélange Grey  
Black / Black

S | M | L



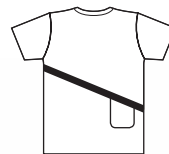
32

SS12 – MFPT / Front Pocket Tee

Menswear Collection

Blue / Mélange Grey  
Yellow / Mélange Grey  
Red / Mélange Grey  
Green / Charcoal Grey  
Black / Mélange Grey  
Black / Black

S | M | L



33

SS12 – MBPT / Back Pocket Tee

Menswear Collection

Blue / Mélange Grey  
Yellow / Mélange Grey  
Red / Mélange Grey  
Green / Charcoal Grey  
Black / Mélange Grey  
Black / Black

S | M | L



34

SS12 - MTPT / Two Pocket Tee



35

Accessories

- Red / Reflective
- Green / Reflective
- White / Reflective
- Flouro / Reflective
- Off-Cut Animal



36

SS12/R-Squirrel



37





# Christopher RÆBURN

Visit our new website  
→ [www.christopherraeburn.co.uk](http://www.christopherraeburn.co.uk)  
Follow us on  

FABRIC KEY

Nylon Parachute



Showproof Cotton



Patchwork Military



Shardworking



Skylon



Waxed



Jersey



Squirrel



For information on booking appointments to view the collection, please contact: [sales@christopherraeburn.co.uk](mailto:sales@christopherraeburn.co.uk) or phone +44 (0) 20 8525 0687

For more information or media enquiries please contact:  
Hugh Gallagher  
Exposure | EDIT Account Manager  
[hugh.gallagher@exposure.net](mailto:hugh.gallagher@exposure.net)  
+44 (0) 20 7907 7145

[www.christopherraeburn.co.uk](http://www.christopherraeburn.co.uk)  
[www.christopherraeburn.co.uk/shop](http://www.christopherraeburn.co.uk/shop)

Print: Whiteprint  
Design: Régis Tosetti, London  
with Simon Palmieri  
Photography: Sam Scott-Hunter

Remade in England on 80% recycled  
Greencoat 80 Silk FSC 115 gsm paper kindly  
provided by Howard Smith Paper Group



WORLD  
LAND  
TRUST™

[www.carbonbalancedpaper.com](http://www.carbonbalancedpaper.com)  
CBP0003821502114540

Supported by:



VICTORINOX

BRITISH FASHION COUNCIL

NEWGEN

SPONSORED BY TOPSHOP



CENTRE  
FOR  
FASHION  
ENTERPRISE



Howard Smith Paper  
Group

# Christopher RÆBURN

## Women's Collection

1 100% 100% Nylon Shell  
100% 100% Nylon Lining



2 100% 100% Nylon Shell  
100% 100% Nylon Lining



3 100% 100% Nylon Shell  
100% 100% Nylon Lining  
100% 100% Nylon Lining



4 100% 100% Nylon Shell  
100% 100% Nylon Lining



5 100% 100% Nylon Shell  
100% 100% Nylon Lining



6 100% 100% Nylon Shell  
100% 100% Nylon Lining



7 100% 100% Nylon Shell  
100% 100% Nylon Lining



8 100% 100% Nylon Shell  
100% 100% Nylon Lining



9 100% 100% Nylon Shell  
100% 100% Nylon Lining



10 100% 100% Nylon Shell  
100% 100% Nylon Lining



11 100% 100% Nylon Shell  
100% 100% Nylon Lining



12 100% 100% Nylon Shell  
100% 100% Nylon Lining



13 100% 100% Nylon Shell  
100% 100% Nylon Lining



14 100% 100% Nylon Shell  
100% 100% Nylon Lining



15 100% 100% Nylon Shell  
100% 100% Nylon Lining



16 100% 100% Nylon Shell  
100% 100% Nylon Lining



17 100% 100% Nylon Shell  
100% 100% Nylon Lining



18 100% 100% Nylon Shell  
100% 100% Nylon Lining



19 100% 100% Nylon Shell  
100% 100% Nylon Lining



20 100% 100% Nylon Shell  
100% 100% Nylon Lining



21 100% 100% Nylon Shell  
100% 100% Nylon Lining



22 100% 100% Nylon Shell  
100% 100% Nylon Lining



23 100% 100% Nylon Shell  
100% 100% Nylon Lining



24 100% 100% Nylon Shell  
100% 100% Nylon Lining



## Menswear Collection

25 100% 100% Nylon Shell  
100% 100% Nylon Lining



26 100% 100% Nylon Shell  
100% 100% Nylon Lining



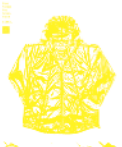
27 100% 100% Nylon Shell  
100% 100% Nylon Lining



28 100% 100% Nylon Shell  
100% 100% Nylon Lining



29 100% 100% Nylon Shell  
100% 100% Nylon Lining



30 100% 100% Nylon Shell  
100% 100% Nylon Lining



31 100% 100% Nylon Shell  
100% 100% Nylon Lining



32 100% 100% Nylon Shell  
100% 100% Nylon Lining



33 100% 100% Nylon Shell  
100% 100% Nylon Lining



34 100% 100% Nylon Shell  
100% 100% Nylon Lining



35 100% 100% Nylon Shell  
100% 100% Nylon Lining



36 100% 100% Nylon Shell  
100% 100% Nylon Lining

